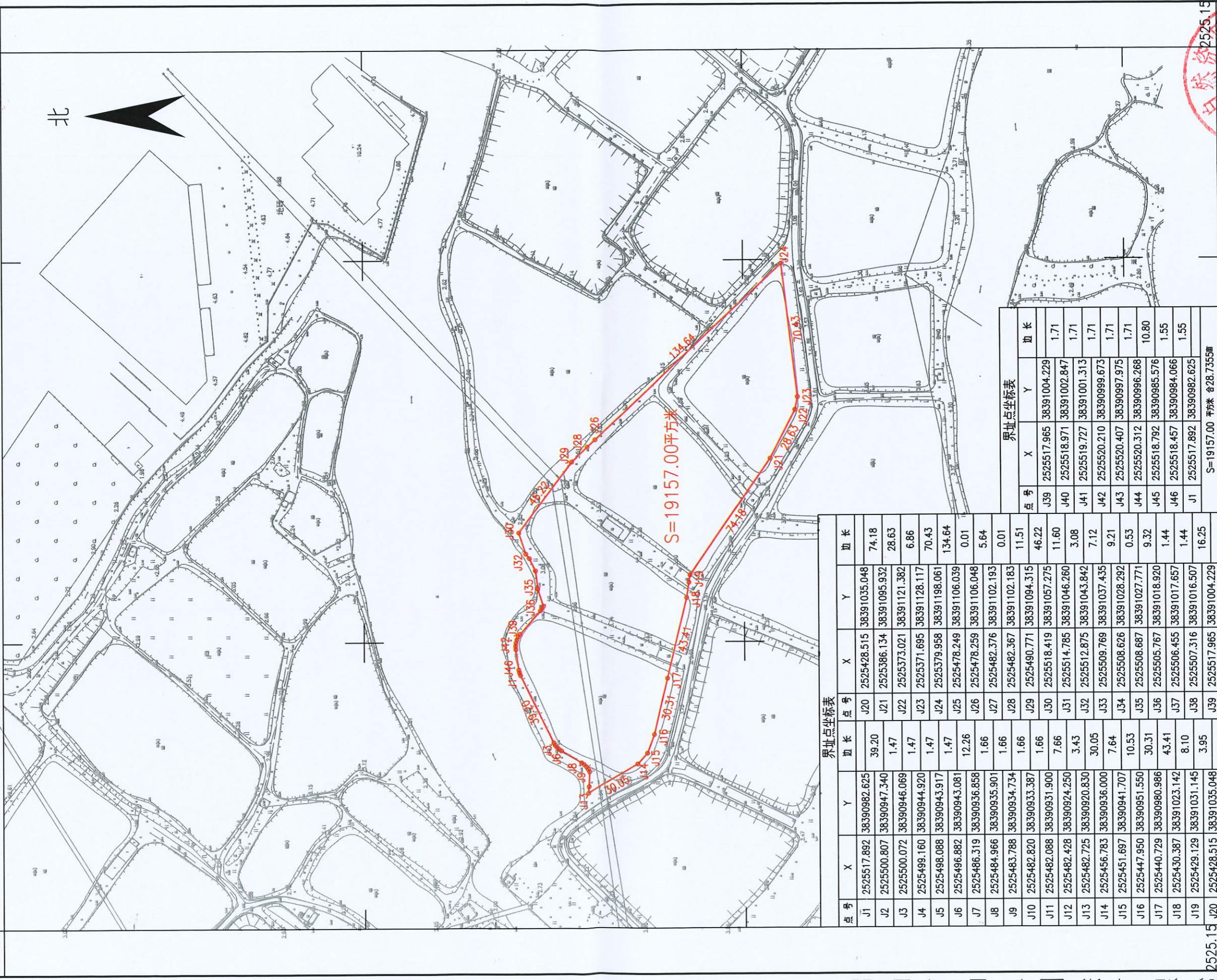


鹤山市古劳镇2021年度第十四批次城镇建设用地图测定界图 <GL224>

鹤山市古劳镇双桥村民委员会

单位: m.m²

38390.85 38391.31 2525.79 2525.79



界址点坐标表

点号	X	Y	边长	点号	X	Y	边长
J1	2525517.892	38390982.625	39.20	J20	2525428.515	38391035.048	74.18
J2	2525500.807	38390947.340	1.47	J21	2525386.134	38391095.932	28.63
J3	2525500.072	38390946.069	1.47	J22	2525373.021	38391121.382	6.86
J4	2525499.160	38390944.920	1.47	J23	2525371.695	38391128.117	70.43
J5	2525498.088	38390943.917	1.47	J24	2525379.958	38391198.061	134.64
J6	2525496.882	38390943.081	12.26	J25	2525478.249	38391106.039	0.01
J7	2525486.319	38390936.858	1.66	J26	2525478.259	38391106.048	5.64
J8	2525484.966	38390935.901	1.66	J27	2525482.376	38391102.193	0.01
J9	2525483.788	38390934.734	1.66	J28	2525482.367	38391102.183	11.51
J10	2525482.820	38390933.387	1.66	J29	2525490.771	38391094.315	46.22
J11	2525482.088	38390931.900	7.66	J30	2525518.419	38391057.275	11.60
J12	2525482.428	38390924.250	3.43	J31	2525514.785	38391046.280	3.08
J13	2525482.725	38390920.830	30.05	J32	2525512.875	38391043.842	7.12
J14	2525456.783	38390936.000	7.64	J33	2525509.769	38391037.435	9.21
J15	2525451.687	38390941.707	10.53	J34	2525508.626	38391028.292	0.53
J16	2525447.950	38390951.550	30.31	J35	2525508.687	38391027.771	9.32
J17	2525440.729	38390980.986	43.41	J36	2525505.767	38391018.920	1.44
J18	2525430.387	38391023.142	8.10	J37	2525506.455	38391017.657	1.44
J19	2525429.129	38391031.145	3.95	J38	2525507.316	38391016.507	16.25
J20	2525428.515	38391035.048		J39	2525517.965	38391004.229	

界址点坐标表

点号	X	Y	边长
J39	2525517.965	38391004.229	1.71
J40	2525518.971	38391002.847	1.71
J41	2525519.727	38391001.313	1.71
J42	2525520.210	38390999.673	1.71
J43	2525520.407	38390997.975	1.71
J44	2525520.312	38390996.268	10.80
J45	2525518.792	38390985.576	1.55
J46	2525518.457	38390984.066	1.55
J1	2525517.892	38390982.625	
S=19157.00 平方米			合28.7355亩



绘图员: 温富城
 检查员: 周军
 审核员: 周冰锋

38390.85

2021年6月数字化制图
 2000国家大地坐标系: 中央子午线114度
 1985国家高程基准, 等高距为1米
 2007年版式编号: 乙测资字44500859

鹤山市山水测绘有限公司

2021年6月数字化制图

2000国家大地坐标系: 中央子午线114度

1985国家高程基准, 等高距为1米

2007年版式编号: 乙测资字44500859

1:2000

鹤山市2021年度第十四批次城镇建设用地的勘测界定图 (GL225)

鹤山市古劳镇双桥村民委员会

单位: m.m²

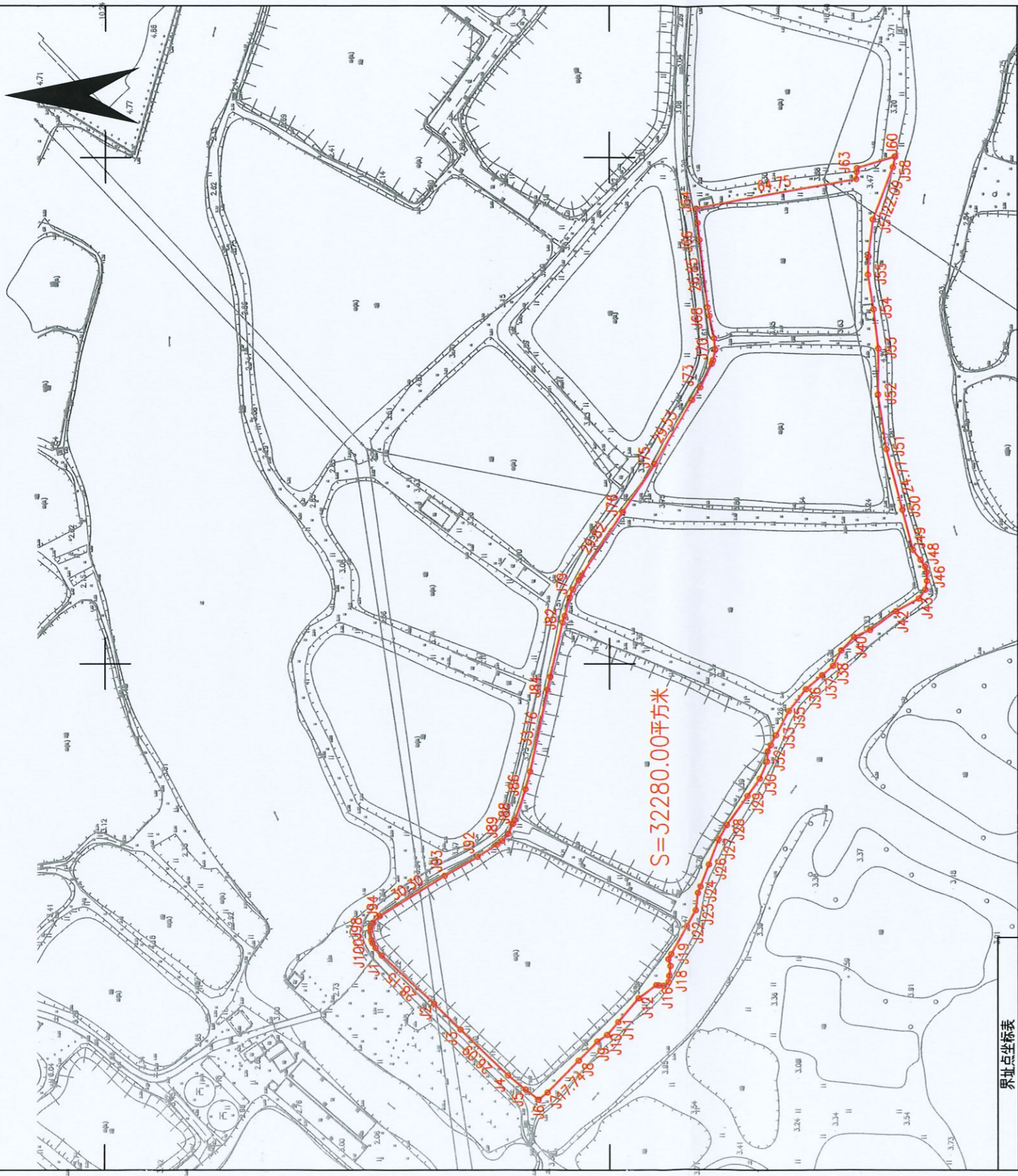
38390.8

38391.26

2525.69

2525.69

北



界址点坐标表

界址点坐标表

点号	X	Y	边长
J1	2525490.420	38390884.865	28.15
J2	2525469.695	38390865.813	14.65
J3	2525459.193	38390855.597	26.09
J4	2525440.491	38390837.402	8.93
J5	2525433.506	38390831.846	6.49
J6	2525428.383	38390827.854	4.65
J7	2525424.717	38390830.710	17.74
J8	2525412.293	38390843.379	10.56
J9	2525404.902	38390850.914	4.62
J10	2525401.092	38390853.533	6.62
J11	2525396.790	38390858.570	12.36
J12	2525388.763	38390867.969	8.66
J13	2525381.817	38390873.148	1.08
J14	2525380.736	38390873.050	0.11
J15	2525380.649	38390873.115	1.89
J16	2525378.770	38390872.944	2.40
J17	2525376.825	38390874.346	2.53
J18	2525376.507	38390876.858	3.87
J19	2525376.021	38390880.697	2.86
J20	2525376.850	38390883.437	2.22
J21	2525375.753	38390885.365	12.52
J22	2525369.562	38390896.243	

点号	X	Y	边长	点号	X	Y	边长
J22	2525369.562	38390896.243	7.29	J42	2525266.443	38391020.896	10.39
J23	2525365.958	38390902.576	6.88	J43	2525277.346	38391025.912	4.39
J24	2525365.116	38390909.404	2.78	J44	2525274.730	38391029.438	3.51
J25	2525364.121	38390912.001	9.40	J45	2525274.054	38391032.881	3.44
J26	2525360.760	38390920.775	10.59	J46	2525274.187	38391036.321	2.33
J27	2525356.970	38390930.666	6.60	J47	2525274.857	38391038.557	3.19
J28	2525353.604	38390936.343	14.16	J48	2525276.614	38391041.222	5.00
J29	2525345.402	38390947.883	8.46	J49	2525279.706	38391045.154	16.33
J30	2525340.501	38390954.780	7.35	J50	2525283.844	38391060.950	24.77
J31	2525337.578	38390961.523	4.04	J51	2525290.121	38391084.914	21.86
J32	2525337.356	38390965.556	2.79	J52	2525293.456	38391106.520	18.16
J33	2525336.047	38390968.016	4.42	J53	2525293.321	38391124.683	15.63
J34	2525333.973	38390971.916	10.86	J54	2525295.115	38391140.207	13.86
J35	2525328.870	38390981.506	10.91	J55	2525297.258	38391153.902	7.15
J36	2525322.114	38390990.068	8.45	J56	2525297.090	38391161.055	14.75
J37	2525315.721	38390995.599	5.73	J57	2525295.323	38391175.686	22.09
J38	2525311.391	38390999.346	6.93	J58	2525287.407	38391196.318	4.31
J39	2525308.035	38391005.405	7.28	J59	2525286.488	38391200.532	0.17
J40	2525303.069	38391010.724	6.94	J60	2525286.656	38391200.506	15.58
J41	2525296.686	38391013.437	12.67	J61	2525301.588	38391195.998	1.54
J42	2525286.443	38391020.896		J62	2525301.658	38391194.458	

2525.05

2525.05

38390.8

38391.26

2021年6月数字制图
2000国家大地坐标系: 中央子午线114度
1985国家高程基准, 等高距为1米
2007年版式
证号: 乙测资字44500859

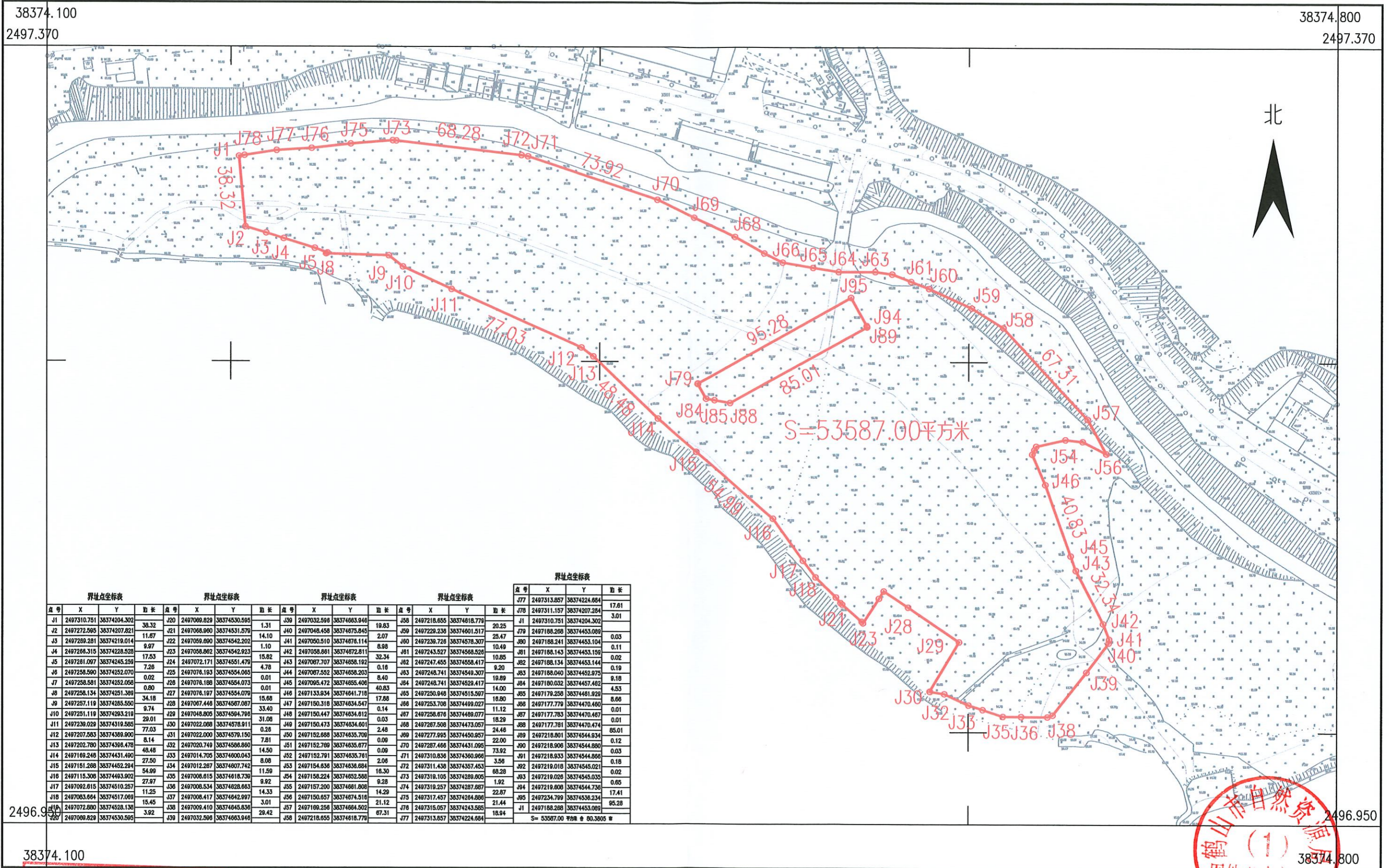
1:2000

绘图员: 温雷城
检查员: 周军
审核员: 周泳锋

鹤山市2021年度第十四批次城镇建设用地图(ZS392)

鹤山市址山镇云东村民委员会

单位: m.m²



鹤山市山水测绘有限公司

界址点坐标表				界址点坐标表				界址点坐标表				界址点坐标表				界址点坐标表			
点号	X	Y	边长	点号	X	Y	边长	点号	X	Y	边长	点号	X	Y	边长	点号	X	Y	边长
J1	2497310.751	38374204.302	38.32	J20	2497069.829	38374530.595	1.31	J39	2497032.598	38374663.946	19.83	J58	2497218.655	38374618.779	20.25	J77	2497313.857	38374224.684	17.61
J2	2497272.595	38374207.821	11.67	J21	2497068.990	38374531.570	14.10	J40	2497048.458	38374875.845	2.07	J59	2497229.236	38374601.517	25.47	J78	2497311.157	38374207.284	3.01
J3	2497289.281	38374219.014	9.97	J22	2497059.690	38374542.202	15.82	J41	2497050.510	38374878.114	8.98	J60	2497236.728	38374578.307	10.49	J79	2497188.288	38374453.089	0.03
J4	2497286.315	38374228.526	17.53	J23	2497058.862	38374542.923	15.82	J42	2497058.861	38374872.811	32.34	J61	2497243.527	38374568.526	10.85	J80	2497188.241	38374453.104	0.11
J5	2497281.097	38374245.259	7.28	J24	2497072.171	38374551.479	4.78	J43	2497067.707	38374858.192	0.18	J62	2497247.465	38374558.417	9.20	J81	2497188.143	38374453.159	0.02
J6	2497258.590	38374252.070	0.02	J25	2497078.193	38374554.063	0.01	J44	2497067.552	38374858.203	8.40	J63	2497248.741	38374549.307	19.89	J82	2497188.134	38374453.144	0.19
J7	2497258.581	38374252.058	0.80	J26	2497078.198	38374554.073	0.01	J45	2497095.472	38374855.408	40.83	J64	2497248.741	38374549.317	14.00	J83	2497188.040	38374452.975	9.18
J8	2497258.134	38374251.389	34.18	J27	2497078.197	38374554.076	15.68	J46	2497133.834	38374641.716	17.88	J65	2497250.946	38374515.597	18.80	J84	2497188.032	38374452.482	4.53
J9	2497257.119	38374285.550	9.74	J28	2497067.446	38374567.087	33.40	J47	2497190.318	38374834.547	0.14	J66	2497253.708	38374499.027	11.12	J85	2497178.258	38374461.929	8.66
J10	2497251.119	38374293.219	29.01	J29	2497048.805	38374594.799	31.08	J48	2497150.447	38374834.612	0.03	J67	2497258.676	38374489.077	18.29	J86	2497177.779	38374470.460	0.01
J11	2497239.029	38374319.585	77.03	J30	2497022.098	38374578.911	0.26	J49	2497150.473	38374834.601	2.48	J68	2497287.508	38374473.057	24.46	J87	2497177.783	38374470.467	0.01
J12	2497207.583	38374389.900	8.14	J31	2497022.000	38374579.150	0.09	J50	2497152.888	38374635.709	0.09	J69	2497277.995	38374450.857	22.00	J88	2497177.781	38374470.474	65.01
J13	2497202.780	38374398.478	48.48	J32	2497020.749	38374588.860	14.50	J51	2497152.789	38374635.677	0.09	J70	2497287.466	38374431.095	73.92	J89	2497178.801	38374544.934	0.12
J14	2497189.248	38374431.490	27.50	J33	2497014.705	38374600.043	8.08	J52	2497152.791	38374635.781	21.12	J71	2497310.836	38374360.966	3.56	J90	2497218.906	38374544.880	0.03
J15	2497151.288	38374452.294	54.99	J34	2497012.287	38374607.742	11.59	J53	2497154.836	38374636.684	16.30	J72	2497311.438	38374357.453	68.28	J91	2497218.933	38374544.866	0.18
J16	2497115.308	38374493.902	27.97	J35	2497008.615	38374618.739	9.92	J54	2497158.224	38374652.588	9.28	J73	2497310.105	38374289.806	1.92	J92	2497219.018	38374545.021	0.02
J17	2497092.615	38374510.257	11.25	J36	2497008.534	38374628.663	14.33	J55	2497157.200	38374661.808	14.29	J74	2497319.257	38374287.687	22.87	J93	2497219.028	38374545.036	0.65
J18	2497083.664	38374517.069	15.45	J37	2497008.417	38374642.997	3.01	J56	2497150.657	38374674.518	21.12	J75	2497317.457	38374284.886	21.44	J94	2497219.008	38374544.736	17.41
J19	2497072.880	38374528.138	3.92	J38	2497009.410	38374645.838	28.42	J57	2497189.258	38374664.502	67.31	J76	2497315.057	38374243.585	18.94	J95	2497234.799	38374538.234	65.28
J20	2497069.829	38374530.595		J39	2497032.598	38374663.946		J58	2497218.655	38374618.779		J77	2497313.857	38374224.684		J96	2497188.288	38374453.089	



鹤山市山水测绘有限公司
2021年11月数字化制图
2000国家大地坐标系, 中央子午线114度
1985国家高程基准, 等高距为1米
2007年版式 乙测资字44500859

1:2000

绘图员: 姜立转
检查员: 周军
审核员: 周泳锋